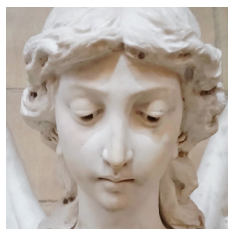


CCC SCAVENGER HUNT APRIL 2026 ANSWER SHEET



1 Free-standing angel sculpture in the middle of the north aisle.



2 Detail from the Christ Church Cathedral banner hanging to the right of the altar area.



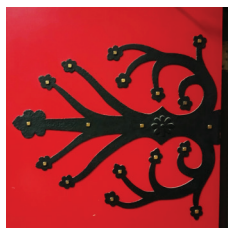
3 Commemorating our 100 years as a Cathedral in 1988, this stone came to us from the Cathedral Church of Christ in Canterbury, England, the Mother Church of the Anglican Communion, of which the Episcopal Church is part. On the west wall.



4 Canopy of the Cathedra (Bishop's Chair) on the high altar, carved by James P. Jamieson of St. Louis and dedicated in 1916 by Bishop Daniel Tuttle.



5 Chandeliers in Nave. The tops are in the shape of a Bishop's mitre (hat) and the gold detail inside is a fleur de lis, the symbol of St. Louis.



6 Detail on the door in east wall leading from the church to the Bishop Tuttle Memorial building.



7 Canopy over the old pulpit to the left of the altar area. This canopy was from the old Roosevelt organ, dating from the early 1890s.



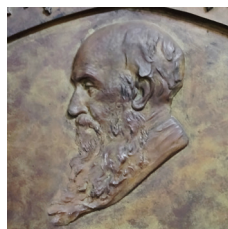
8 Detail from window on south wall toward the back of the church. Jesus telling Mary and Martha that their brother Lazarus would rise from the dead. Installed in 1908. (Back lights must be lit for this window to be seen)



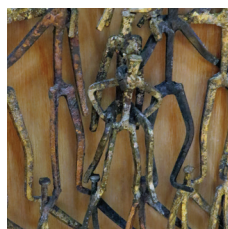
9 Installed in 1954, this detail depicts Abraham Lincoln emancipating the slaves to their freedom. Upper window on south wall at east end of catwalk, just beyond the moveable pulpit.



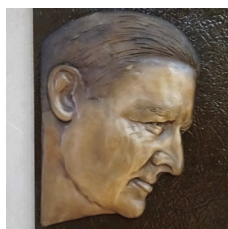
10 This lunette window is below the Lincoln window. The upper circle has a cross and crown to represent Christ's divinity; the lower circle, a descending dove to represent the Trinity. The side circles' script letters are a mystery.



11 Plaque honoring Montgomery Schuyler, Rector of Christ Church from 1854 to 1888. His title changed to Dean when Christ Church became a Cathedral and he served as Dean until his death in 1896. In corner of west wall; plaque faces south



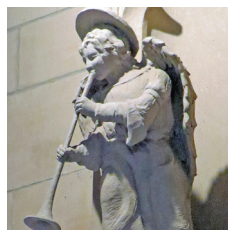
12 Detail from the forwardmost (moveable) pulpit. The sculpture is called The Fabric of Human Involvement and was given to the Cathedral in 1969 by Bishop William Scarlett in memory of his wife. The artist was Clark B. Fitzgerald.



13 Detail from plaque commemorating Poet and Playwright T.S. (Thomas Sterns) Eliot, who was born in St. Louis. On west wall.



14 The Resurrection, the meeting of Mary Magdalene and the risen Jesus. Detail on the high altar. The reredos (altar screen) and altar were made by the studio of Harry Hems in England and were consecrated on Christmas Day, 1911.



15 Angel with trumpet. On west wall. Along with the angel with violin, a gift from Roger and Louise Grossheider, who both played in the St. Louis Symphony.



16 Detail from the old pulpit to the left of the altar area. This carved wood pulpit dates from before 1880.